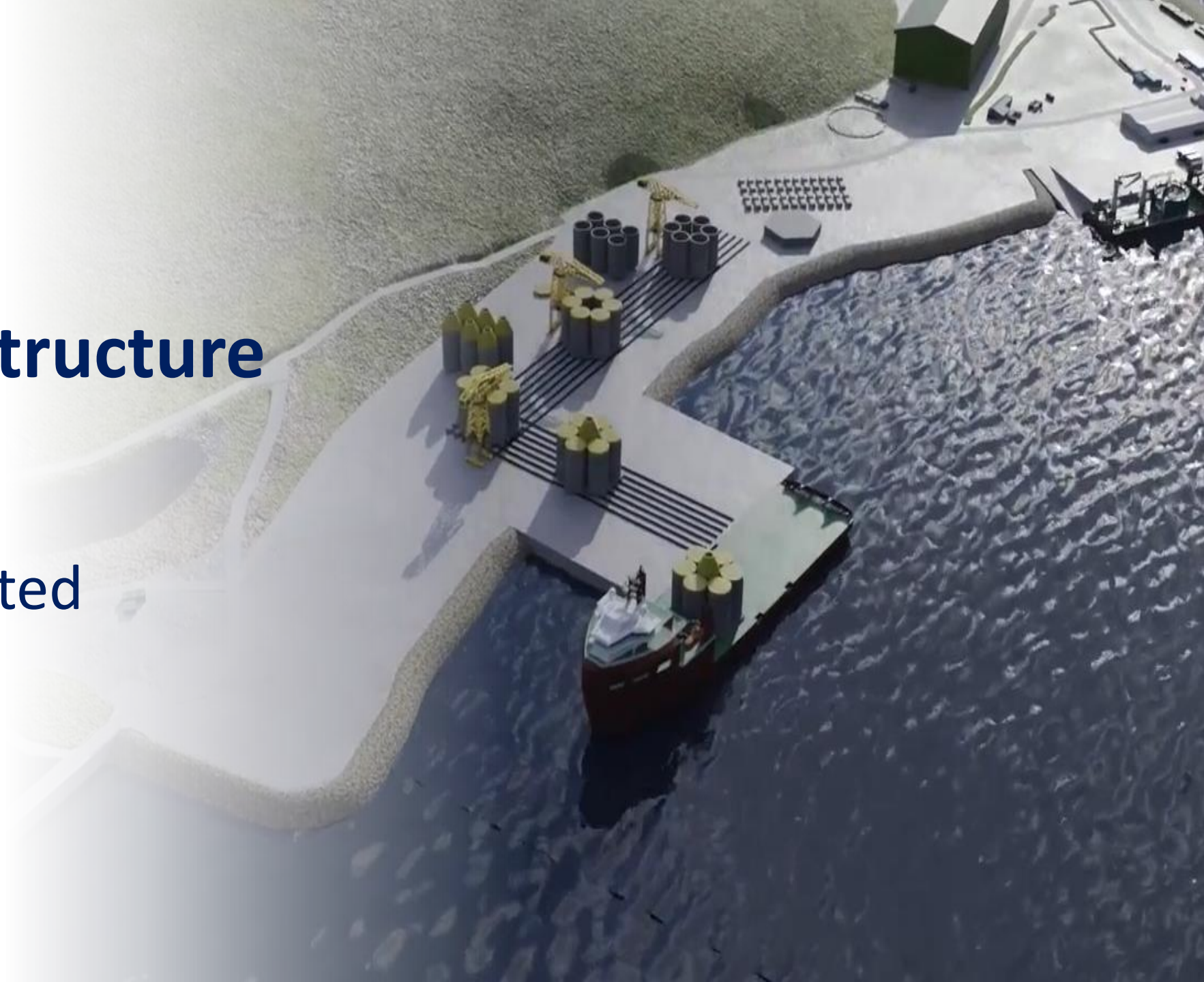




Ports & Infrastructure

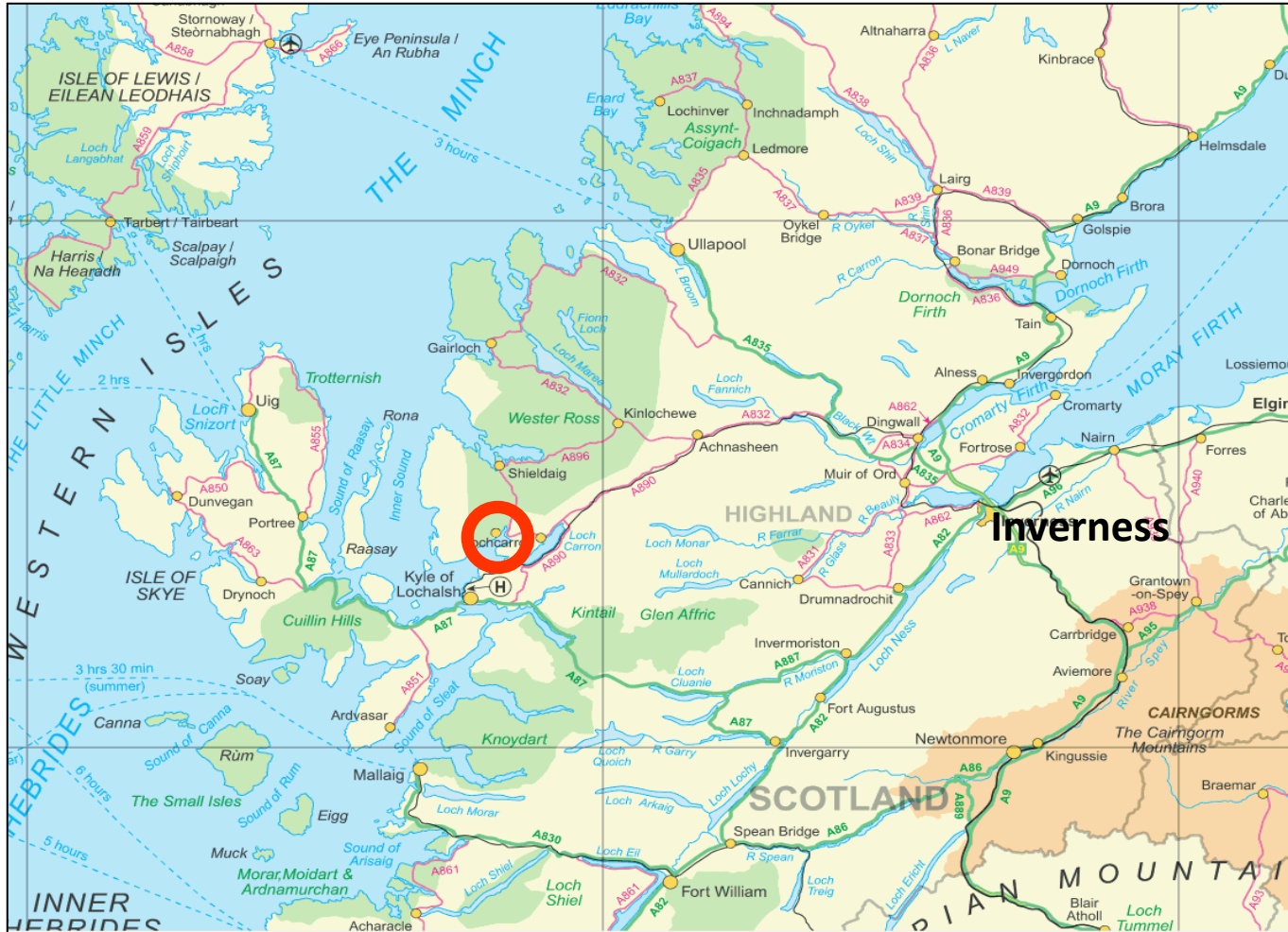
Colin Ortlepp

Kishorn Port Limited





Location



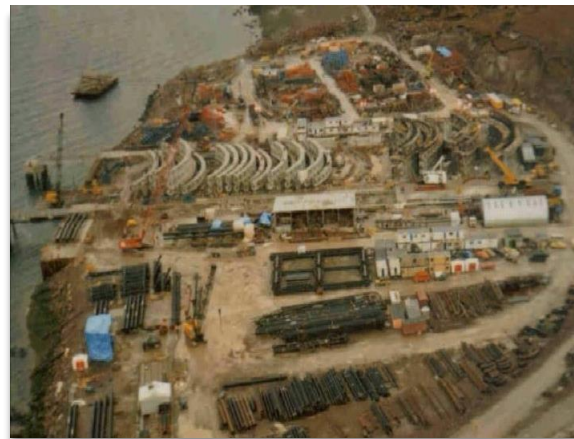
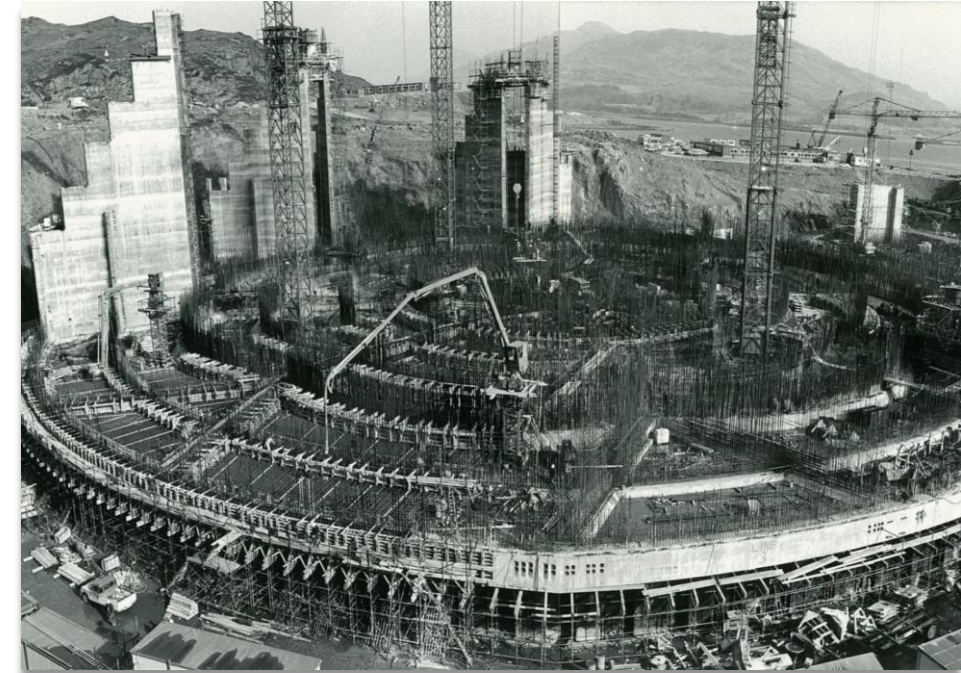


Location





1970s Ninian Central Platform





Dry Dock

- 13.8m water depth @MHWS
- 160m working diameter
- 27,000m² floor area
- Concrete base on rock
- Planned extension to provide greater capacity





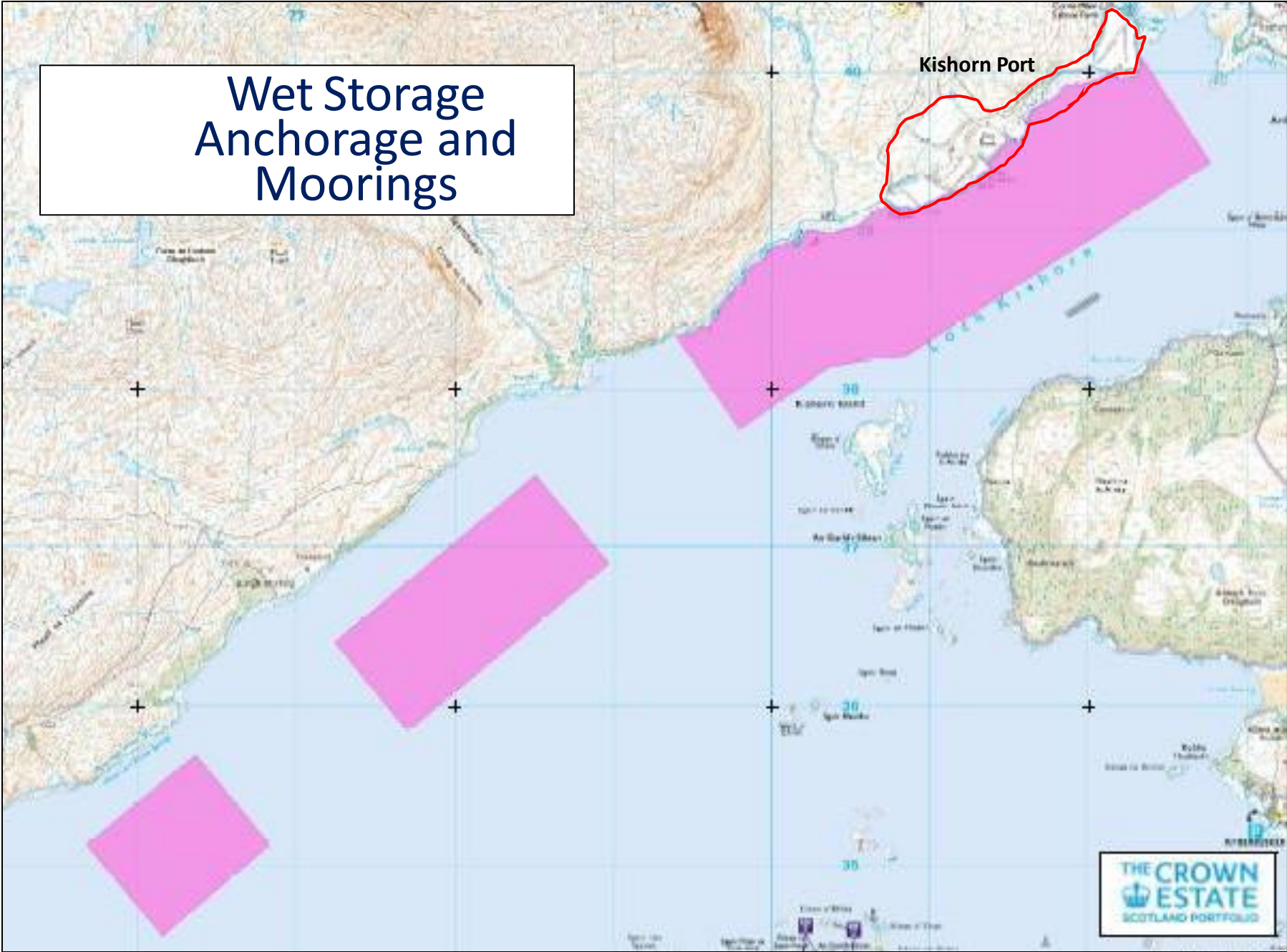
Aggregate Quarry

- 6.5 million tonne reserve
- High strength rock
- Produces wide range of aggregate products
- Concrete batching plant





Wet Storage
Anchorage and
Moorings





Substructure Manufacturing at Ports

- **Laydown Land** – land for manufacturing, assembly, storage (materials, components & structures)
- **Quayside Draft** – sufficient draft for substructures
- **Serial Production** – in situ or ‘conveyor belt’, on land/dry dock
- **Load Out Options** - barge, lift, float-out
- **Load Bearing** – for SPMTs, ring cranes
- **Inbound Materials** – cement, re-bar





Opportunities for Concrete

- **Shorter Supply Chains** – Scotland/UK raw materials
- **Local Content** – aggregates/cement/rebar
- **Employment** – civil engineering and other skills
- **Joint Working Between Ports** – floating substructures
- **Long term serial production** – port investment





CemLime[®]

- Lower carbon cement replacement (CIIA-LL)
- Produced from milled limestone
- Will substitute up to 20% of CEM1
- A reduction of 78kg of CO₂ per m³
- Up to 19% CO₂ reduction in concrete
- Locally sourced





Port Development

Phase 1a

- **Dry dock extension** – increase dock floor by approx. 100m x 60m – yield rock for reclamation work
- **Foreshore reclamation** - additional 10ha. of laydown land

Phase 1b

- **120m quayside** with 12m CD water depth

Phase 2

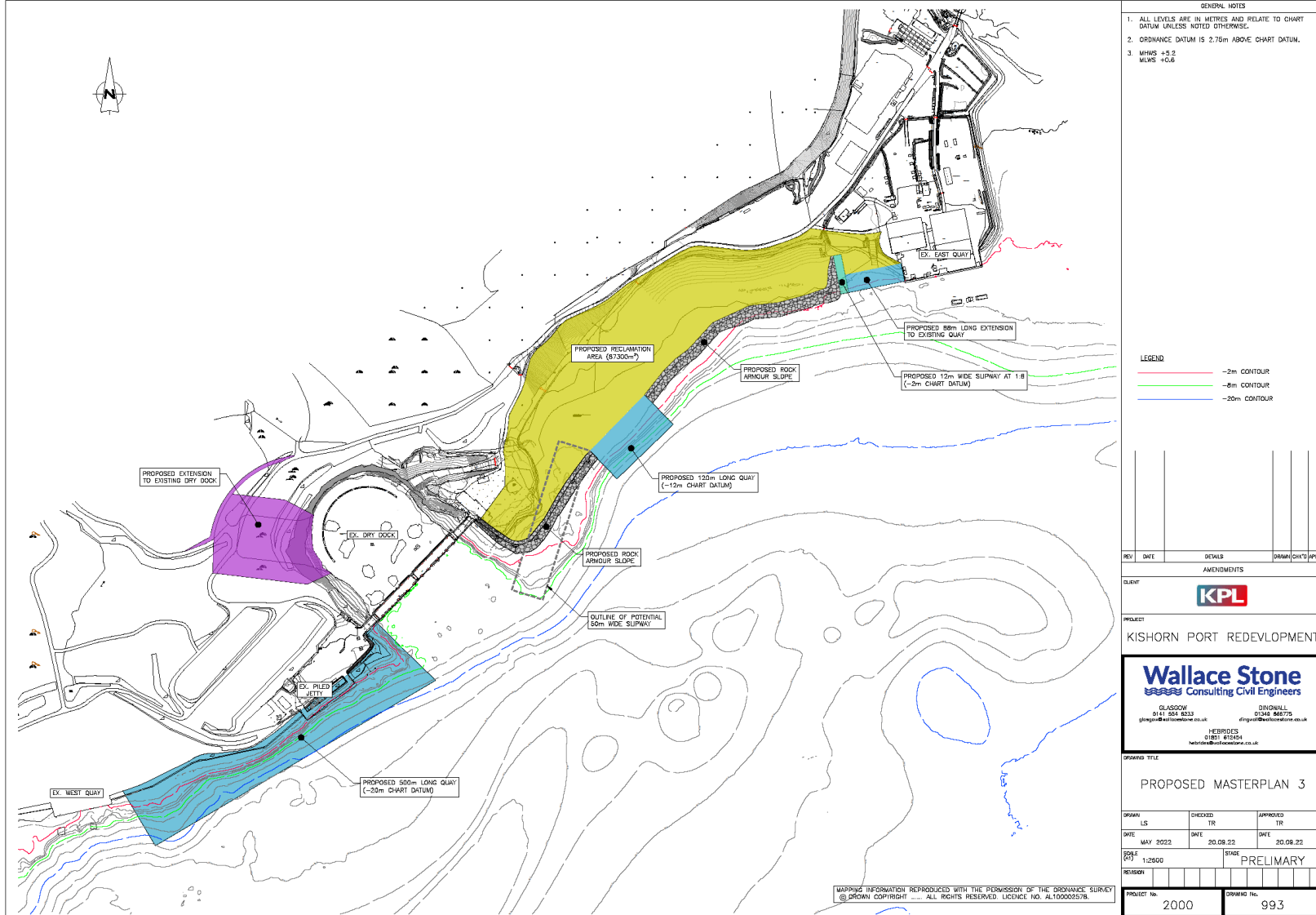
- **500m long deep water quay** to provide- 20m CD water depth

Ongoing

- **Electricity supply** upgrade – transition from diesel generation to renewable source (hydro)



Port Development



GENERAL NOTES

1. ALL LEVELS ARE IN METRES AND RELATE TO CHART DATUM UNLESS NOTED OTHERWISE.
2. ORDNANCE DATUM IS 2.75m ABOVE CHART DATUM.
3. MHWs +5.2
MLWS +0.6

LEGEND

- 2m CONTOUR
- 8m CONTOUR
- 20m CONTOUR

REV	DATE	DETAILS	DRAWN	CHK'D	APP'D

AMENDMENTS



PROJECT
KISHORN PORT REDEVELOPMENT

Wallace Stone
Consulting Civil Engineers

GLASGOW 0141 854 8333
glasgow@wallacestone.co.uk

DUNDEE 01342 446775
dundee@wallacestone.co.uk

HEBRIDES 01851 612454
hebrides@wallacestone.co.uk

DRAWING TITLE

PROPOSED MASTERPLAN 3

DRAWN	CHECKED	APPROVED
LS	TR	TR
DATE	DATE	DATE
MAY 2022	20.09.22	20.09.22
SCALE	STAGE	
1:2500	PRELIMINARY	

MAPPING INFORMATION REPRODUCED WITH THE PERMISSION OF THE ORDNANCE SURVEY
© ORDNANCE SURVEY. ALL RIGHTS RESERVED. LICENCE NO. AL1000025/78.

PROJECT No.	DRAWING No.
2000	993

